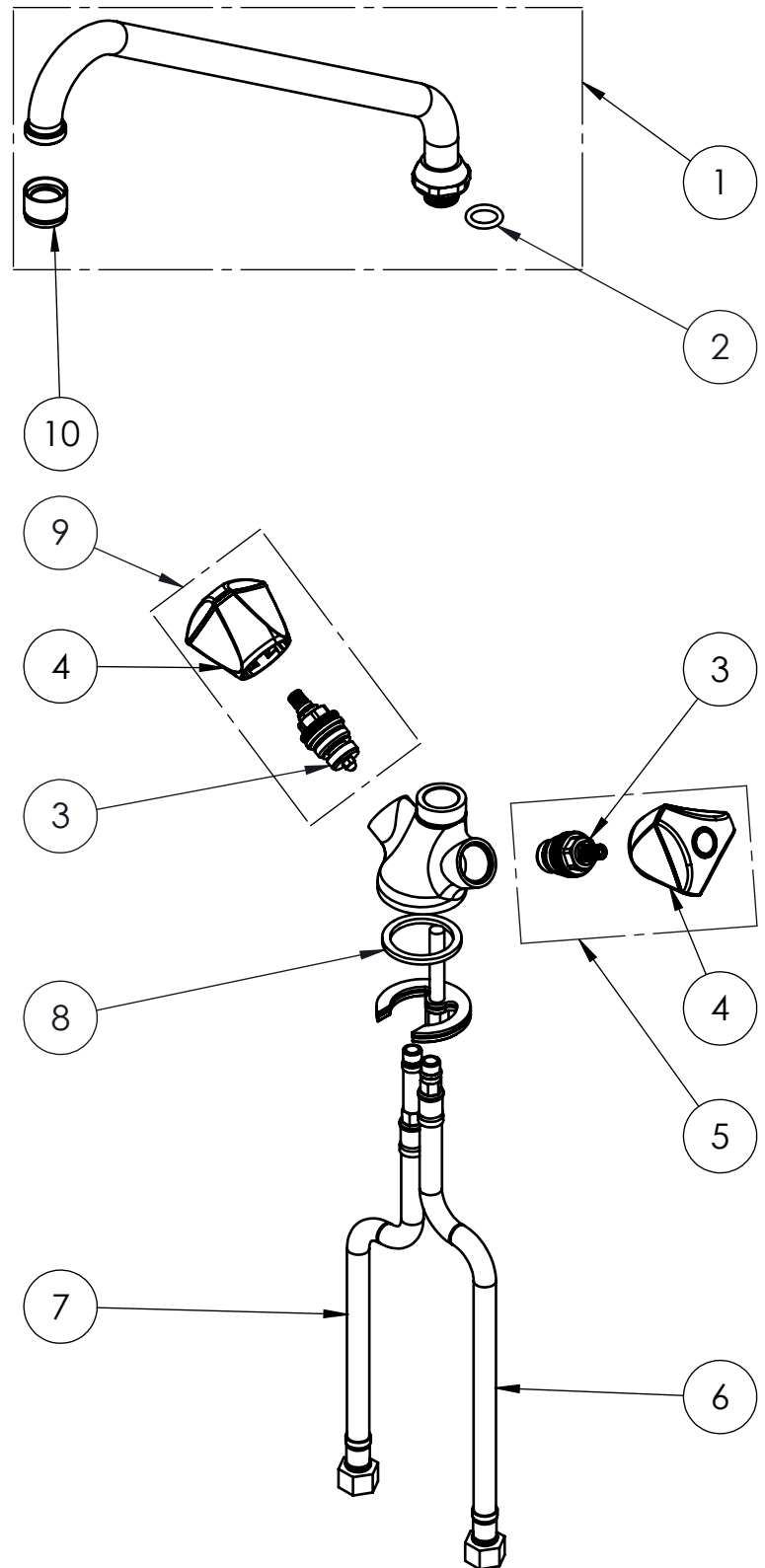


EXPLOSIONSZEICHNUNG



KBS Gastrotechnik GmbH – Schoßbergstraße 26 – 65201 Wiesbaden

ITEM NO.	SALES NO.	DESCRIPTION
1	C058	JOTA SWING NOZZLE Ø18x300
2	P103	O-RING 14X3
3	VS0	G1/2" COMPRESSION HEADWORK
4	H033/color	"3Pe" HANDLE W. COLOR CODED INDEX (specify the color B or R)
5	VS3/B	COMPLETE HANDLE W.BLUE CODED INDEX +COMPRESSION HEADWORK KIT
6	F129	L.35cm Flex S.S. Hose Ø12 Female G3/8" (Short)
7	F098	L.35cm Flex S.S. Hose Ø12 Female G3/8" (Long)
8	P068	FIXING KIT (2920-2962)
9	VS3/R	COMPLETE HANDLE W.RED CODED INDEX +COMPRESSION HEADWORK KIT
10	P015	STREAM REGULATOR OUTLET (Ø20 SPOUT)



TITLE / DESCRIZIONE
Single hole, deck-mount, mixing temperature monoblock faucet with 300mm, 360° swivel nozzle (Ø 18mm). G3/8" female inlets, G1/2" compression headworks, brass, chrome plated, ZAMAK metal chrome plated handles

DRN / DIS

CHD / VER

APPR

SCALE /
SCALA 1:4

DATE /
DATA 08/06/2020

SHEET /
PAG 2 of 2