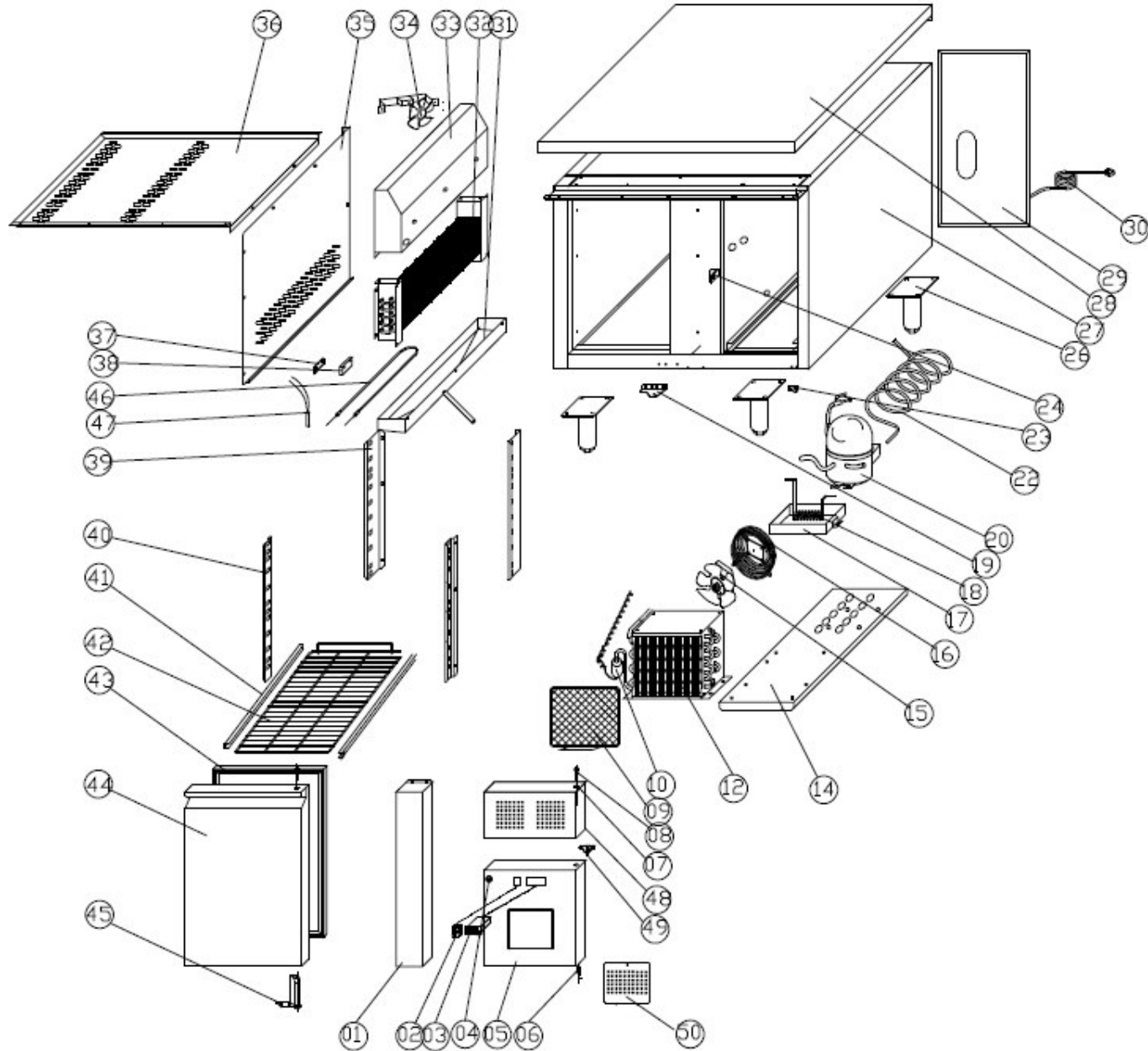


Explosionszeichnung

Edelstahl Kühlisch
KT 110



KBS Gastrotechnik GmbH - Johannes-Kepler-Str. 14 - 55129 Mainz



SPARE PARTS LIST

NO.	CODE	NAME	MODEL	QUY.	MATERIAL	REMARK
1	GN2100TN.01	FIXED FRONT PANEL		1PC	STAINLESS	
2	S900.01	MAIN SWITCH	DRH-2415-3	1PC		
3	GN650BT.16	THERMOSTAT (WITH 2 PROBES)	XR60C	1PC		
4	GN2100TN.86	LOCK		1PC		
5	GN2100TN.02L15	FRONT PANEL		1PC	STAINLESS	
6	GN2100TN.03	HINGE AXIS	Φ7	2PCS	STAINLESS	
7	GN2100TN.07	BUSHING	Φ5	2PCS	STAINLESS	
8	GN2100TN.06	NUT	M8	2PCS	STAINLESS	
9	U-GN2100TN.03N	SCREEN FILTER		1PC		
10	S900.44	FILTER DRIER	20g	1PC	XH-9	
12	GN2100TN.08	CONDENSER	1/4HP	1PC		
14	GN2100TN.09	UNIT BOARD		1PC	ZINC	
15	S900.37	CODENSER FAN	BD01-01/Φ200	1PC		
16	GN650TN.46	BASKETC GUARD GRILLS		1PC	COATED STEEL	
17	GN2100TN.10	WATER BOX		1PC	STAINLESS	
18	GN2100TN.11	EVAPORATE PIPE	Φ6	1PC	COPPER	
19	GN2100TN.12	DOOR HINGE/TIGHT		1PC	STAINLESS	
20	G-S903.01Z	COMPRESSOR	HPKD190A	1PC		
22	G-GN2100TN.13	SUCTION PIPE	Φ8	1PC	COPPER	
23	GN2100TN.14	FRONT PANEL HINGE		1PC	STAINLESS	
24	GN2100TN.15	LOCK HOOK		1 PCS	STAINLESS	
26	GN650TN.07	FEET	H=150	4PCS	STAINLESS	
27	GN1100TN.16	BODY		1PC		
28	GN1100TN.17	TOP	FOAMED STAINLESS	1PC		
29	GN2100TN.18	UNIT ROOM COVER		1PC	ZINC	
30	S900.47	PLUG		1PC		
31	GN2100TN.20	EVAPORATOR WATER PAN		1PC	STAINLESS	
32	GN2100TN.21	EVAPORATOR		1PC		
33	G-GN2100TN.22	FAN SUPPORT		1PC		
34	G-GN2100TN.11	CIRCUIT FAN	EC-2P	1PC		
35	GN2100TN.24	EVAPORATOR COVER		1PC	STAINLESS	
36	GN1100TN.25	AIR FLOW CONDUCT BOARD		1PC	STAINLESS	
37	GN650TN.12	SENSOR FIXED CLIP		1PC	STAINLESS	
38	GN650TN.17	PROBE PADDING		1PC		
39	GN2100TN.26	BACK SUPPORT LEFT/RIGHT		1PAIR	STAINLESS	
40	GN2100TN.30	FRONT SUPPORT LEFT/RIGHT		1PAIR		
41	GN2100TN.31	GUIDE LEFT/RIGHT		1PAIR		
42	GN2100TN.32	SHELF	GN1/1	1PC		
43	GN2100TN.33	GASKET		1PC	PLASTIC	
44	GN2100TN.34	DOOR		1PC		
45	GN650TN.14	DOOR SPRING HINGE		1PC		

46	G-GN2100TN.12	DEFROST HEATING ELEMENT		1PC		
47	GN2100BT.10	PROTECTOR FOR HEATING ELEMENT	10A/65°C 10A/65°C	1PC		
48	GN2100TN.78	UP PANNEL		1PC		
49	GN2100TN.77	MIDDLE HINGE		1PC		RIGHT
50	G-GN2100(L149)	AIR FLOW WINDOW	风窗	1PC		